

CORONAVIRUS / COVID-19

Despite the Coronavirus we are still operating well but are having to severely restrict the service available by prioritising acutely unwell patients and those with serious conditions.

If you think you may have Coronavirus symptoms you should still use the on-line 111 service or call 111 initially.

If you have an urgent need for non-Coronavirus matters contact us but please use E-CONSULT where possible or email.

We are **OPEN** on **GOOD FRIDAY** and **EASTER MONDAY** for essential requests – Nationally all GP practices have been kept open to help with demand.

What work are we doing? A huge change in the way we work has taken up hours of time and also we have had to contact patients at risk, change appointments and had lots of individual queries.

- ◇ **IMMUNISATIONS** are vital to continue—otherwise we will have a Measles or Mumps epidemic. We see plenty of Whooping cough already so need to continue with these.
- ◇ Injections/treatments for cancers such as hormone injections, dressings
- ◇ Blood monitoring for certain drugs
- ◇ Assessing first by phone and then seeing patients (wearing full protective gear) for urgent/ serious symptoms (see table overleaf of examples of serious conditions which you should contact us about)
- ◇ We are still doing routine reviews where we can but doing these via telephone or video link consultations, and using email where possible

We are only booking nurse appointments a few days ahead for ESSENTIAL procedures and these are generally booked in by the nurses themselves after they have spoken to you. GP appointments are done on a daily basis—as we are unable to predict the number of clinicians we will have on site—some of us will now be working at the “hot site”- see overleaf.

We are trying to avoid seeing any patients with Coronavirus at the surgery to protect other patients and our staff. **IF** a patient needs any medical intervention with possible **Covid symptoms** they will either be sent to the Hot Site (appointment only– see overleaf), have a home visit or be taken to hospital in an ambulance in an emergency.



New Face of MMP

The nurse or GP seeing patients on the day will be wearing full personal protective clothing (PPE), a mask/visor and we also provide a mask to patients also if needing close contact examination.

Do contact us if you are worried that your symptoms could be serious or a sign of cancer – these services are still running. Examples (but not an exhaustive list):

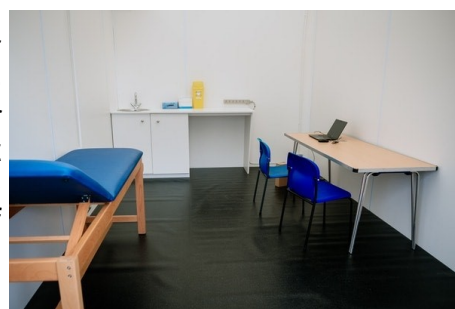
- Chest pains– we would advise 999 for this initially if severe
- Severe abdominal pains/ on going pains in belly
- “funny turns” / strokes / sudden weakness– loss of speech / facial drooping– 999 initially
- Coughing up blood/ breathlessness not due to Covid/coughing for more 4 weeks
- Bleeding from back passage or Passing urine – or bowels looser for more than 4 weeks
- Breast lumps, testicular lumps, abdominal Swelling, post menopausal bleeding
- Weight loss and general fatigue with no obvious cause

Patients with serious on going health problems and having palliative care should still contact us as normal—we will call back and assess.

Shrewsbury Primary Care Network— COVID HOT HUB SITE based at STFC Car Park

This week the SPCN Hot Hub site has opened in the car park of Shrewsbury Town Football Club.

Think of the hub site as an outdoor GP Practice for patients with Covid, who need seeing because of their Covid symptoms or because they need an examination due to another condition or symptom. At the site, which is manned by a security team, a site manager, admin team and marshalls, you will arrive for a pre booked appointment (you will only be seen if you have an appointment that has been booked by your GP Practice, 111 or Shropdoc) in your car (no “on foot” patients will be given access) and you will be directed to either a drive-thru assessment lane, or a patient car park and then called into a clinical assessment room. Your obs, sats, temperature and blood pressure may be taken, and a course of treatment or recovery advice given, or if you are so seriously unwell that you require hospital admission the on-site clinicians will arrange this and an ambulance will be called.



Prescriptions -

POD 0333 358 3509 or email **shropshire.pod@nhs.net**

Please continue to order your prescriptions as **normal**—not early, and same amounts to avoid toilet roll shortage situation! There are no stock issues if we order as normal.

Practice Pharmacist, Ruby Mughal is freeing up the GPs hugely by issuing the majority of prescriptions for us. Do contact her with any queries and allow her to deal with as much as she can.

What can you do to help?

In this unprecedented situation keeping ourselves and others safe is paramount.

Please **WASH YOUR HANDS** frequently and minimise social contact whenever possible.

Please **DO NOT STOCKPILE** - this is not needed and is making the situation worse not better.

Think of others - please do what you can to help elderly neighbours and those in your community.

I hope you can stay well but if you have any fever or cough or symptoms that you think might be the coronavirus **DO NOT** come to the surgery, stay at home, isolate yourself and use the on-line 111 service at 111.nhs.uk/covid-19

With best wishes from Dr Julia Visick and all at Marysville Medical Practice